


# INTRODUCTION TO



# favoriot

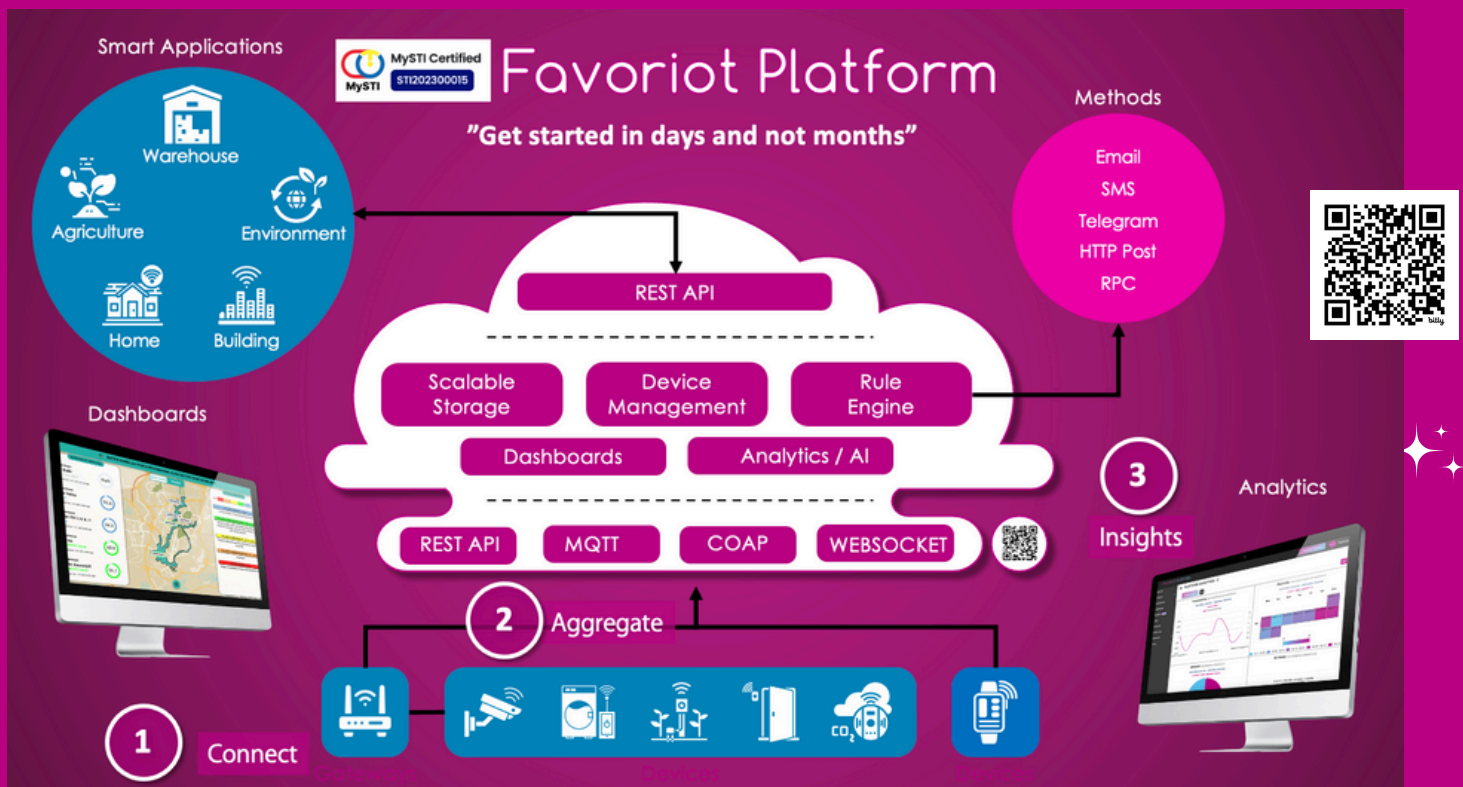
## ENTERPRISE (DEVELOPER)

## IOT PLATFORM



### FOR MORE INFORMATION

- Email: [info@favoriot.com](mailto:info@favoriot.com)
- Phone: +60 3-8071 0381
- Address: FAVORIOT Sdn Bhd,  
Suite 30, Level 3A, IOI  
Business Park, 47100  
Puchong, Selangor, Malaysia
- Website: [www.favoriot.com](http://www.favoriot.com)



The Favoriot Enterprise Platform is ideal for organisations seeking to streamline their IoT ecosystem by managing, analysing, and integrating large volumes of IoT data securely and efficiently. It is particularly suited for industries like smart cities, agriculture, manufacturing, healthcare, and logistics that rely on connected devices to optimise operations.

With features such as comprehensive device management, scalable data ingestion, customisable analytics, and automation through rule-based alerts and workflows, it enables businesses to make real-time, data-driven decisions.

The platform's robust security, flexible integration options, and support for edge processing make it a valuable tool for enterprises aiming to enhance operational efficiency, improve decision-making, and future-proof their IoT investments.

Note: Client must prepare the below for the Favoriot Enterprise IoT Platform installation.

#### FAVORIOT ON-PREM OR PRIVATE CLOUD SPECIFICATION (MINIMUM REQUIREMENTS):

Server 1 (for Hosting Front-End & Database)

- 8 Core / 16 GB Memory / 320 GB Storage / Ubuntu 20.04 or newer

Server 2 (for Database – Backup)

- 8 Core / 16 GB Memory / 320 GB Storage / Ubuntu 20.04 or newer

\*Server 1 and Server 2 can be combined into one server



#### FOR MORE INFORMATION

- Email: [info@favoriot.com](mailto:info@favoriot.com)
- Phone: +60 3-8071 0381
- Address: FAVORIOT Sdn Bhd, Suite 30, Level 3A, IOI Business Park, 47100 Puchong, Selangor, Malaysia
- Website: [www.favoriot.com](http://www.favoriot.com)

# FAVORIOT Enterprise (Developer) IoT Platform Specifications

## Key Features

### Comprehensive Device Management:

- Supports unlimited devices
- Securely connect and manage a large number of diverse data from IoT devices and Gateways.
- Support real-time monitoring of device status.
- Remote device control and configuration (\*Device must support to receive commands)
- Manage device operation in the platform.
- Support for various communication protocols (MQTT, CoAP, REST).
- Hierarchy organisation for efficient management, including Projects, Applications, Groups and Devices.

### Scalable Data Ingestion and Storage:

- Handle high-volume, high-velocity data streams from multiple sources.
- Flexible data storage options to accommodate various data types and formats.

### Powerful Data Analytics and Visualisation:

- Real-time data visualisation through customisable dashboards and widgets.
- Historical data analysis to identify trends and patterns.
- Analytics to optimise operation (including Basic Statistics, Periodical Basic Statistics, Value Growth, Correlation Between Parameters, and Time Series Forecasting).
- Customised report generation based on data analysis.
- Ability to share the visualisation to the public using generated URL links.
- Integration with third-party analytics tools for advanced analysis.

### Flexible Rule Engine:

- Define custom rules and alerts based on real-time data.
- Automate actions such as sending notifications (to predefined email address and Telegram group), controlling devices, or triggering workflows.

### API and Integrations:

- Unlimited APIs
- RESTful API for seamless integration with existing systems and applications.

### Edge Gateway Processing:

- An Edge Gateway Component within platform that connects IoT Gateways to Favoriot Platform to process, manage and store data from end devices that are published through the gateway.

### Security and Compliance:

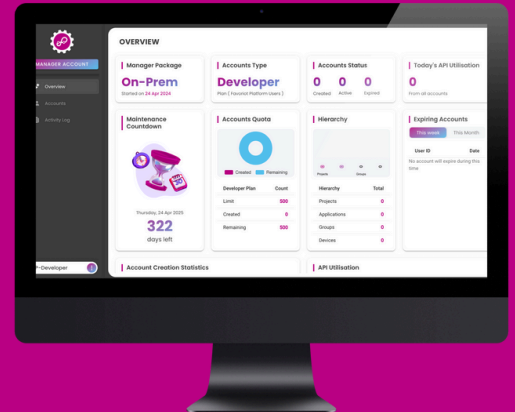
- Use of unique API key and access token to record data in the platform.
- Robust security measures to protect data and devices from unauthorised access.

### Other Features

- Unlimited number of parameters in one stream.
- Ability to send data to a third-party server.
- Download data using CSV or JSON format or preconfigure to send data periodically to email addresses.

### Installer Certification

- The platform installer must be a certified Favoriot Platform Installer. This ensures that the installer has the necessary knowledge and expertise to properly install and configure the platform.



### FOR MORE INFORMATION

- Email: [info@favoriot.com](mailto:info@favoriot.com)
- Phone: +60 3-8071 0381
- Address: FAVORIOT Sdn Bhd, Suite 30, Level 3A, IOI Business Park, 47100 Puchong, Selangor, Malaysia
- Website: [www.favoriot.com](http://www.favoriot.com)

Transform your IoT projects with the Favoriot IoT Platform.